

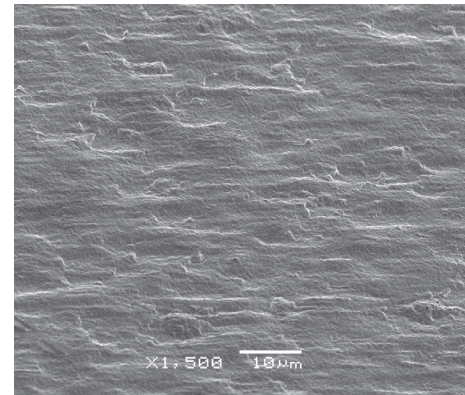
High reliability electrodeposited copper foil.

**Applications:**

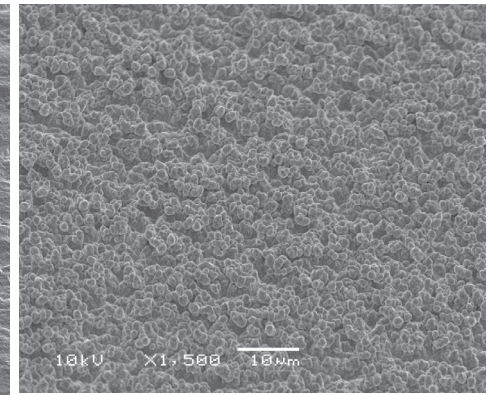
- Resistive layers

**Features:**

- IPC Grade III
- Treatment on matte side of the foil
- Designed for use in resistive layers



Untreated Drum Side  
H oz. /18 µm (1500x)



Treated Matte Side  
H oz. /18 µm (1500x)

**Typical Values:**

| Attribute             |                  | Unit                  | Value |       |      | Reference   |
|-----------------------|------------------|-----------------------|-------|-------|------|---|
| Thickness Designation |                  |                       | T     | H     | 1    | IPC-4562,<br>1.2.5.1<br>Table 1-1;<br>IPC-TM-650-2.2.12 |
| Nominal Thickness     |                  | µm                    | 12    | 18    | 35   |   |
|                       |                  | oz.                   | 3/8   | 1/2   | 1    |   |
| Area Weight           |                  | g/m <sup>2</sup>      | 106.8 | 152.5 | 305  | IPC-TM-650-2.2.17                                       |
|                       |                  | g/254 in <sup>2</sup> | 17.5  | 25    | 50   |   |
|                       |                  | oz./ft <sup>2</sup>   | 0.375 | 0.5   | 1    |   |
| Roughness             | Drum Side<br>Ra  | µm                    | 0.25  | 0.25  | 0.25 | IPC-TM-650-2.4.18                                       |
|                       |                  | µ"                    | 10    | 10    | 10   |   |
|                       | Matte Side<br>Rz | µm                    | 5.08  | 5.08  | 6.35 |   |
|                       |                  | µ"                    | 200   | 200   | 250  |   |
| Tensile               | Ambient          | Kg/mm <sup>2</sup>    | 42.2  | 42.2  | 38.7 | IPC-TM-650-2.4.18                                       |
|                       |                  | Kpsi                  | 60    | 60    | 55   |   |
|                       | 180°C            | Kg/mm <sup>2</sup>    | 21.1  | 21.1  | 21.1 |   |
|                       |                  | Kpsi                  | 30    | 30    | 30   |   |
| Elongation            | Ambient          | %                     | 6     | 8     | 15   | IPC-TM-650-2.4.18                                       |
|                       | 180°C            | %                     | 8     |       |      |   |

*Information in this document is believed to be accurate and reliable and is for informational purpose only. This data sheet does not create any warranties, expressed or implied, as to the fitness for any particular purpose or use. The Denkai America Inc. name and logo are registered trademarks of Nippon Denkai, Ltd. © 2020, Denkai America Inc. All rights reserved. Rev May 4, 2020*