

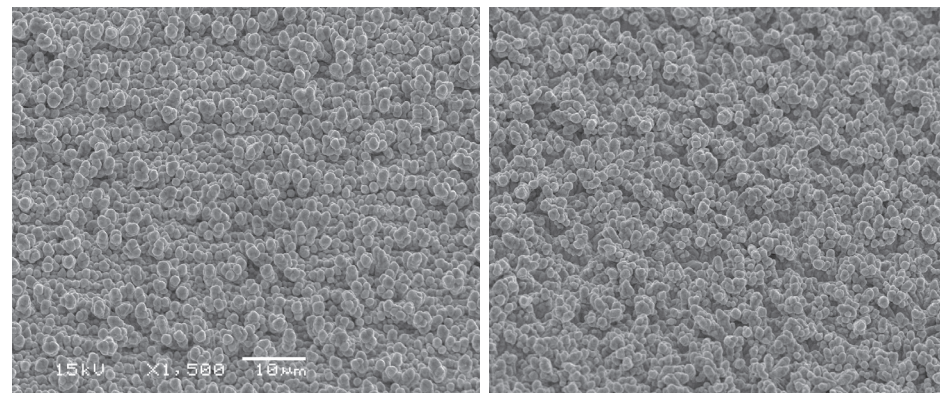
High temperature stability, double treat, electrodeposited copper foil.

Applications:

- PCB inner layers

Features:

- IPC Grade III
- Treatment on both sides of foil
- High temperature lamination compatible



Treated Drum Side
H oz. /18 µm (1500x)

Treated Matte Side
H oz. /18 µm (1500x)

Typical Values:

Attribute		Unit	Value					Reference	
Thickness Designation			Q	T	H	1	2	3	
Nominal Thickness		µm	9	12	18	35	70	103	IPC-4562, 1.2.5.1 Table 1-1; IPC-TM-650-2.2.12
		oz.	1/4	3/8	1/2	1	2	3	
Area Weight		g/m ²	75.9	106.8	152.5	305	610	915	
		g/254 in ²	12.5	17.5	25	50	100	150	
		oz./ft ²	0.25	0.375	0.5	1	2	3	
Roughness	Drum Side	µm			4.06	4.06	4.06		IPC-TM-650-2.2.17
		µ"			160	160	160		
	Matte Side	µm			5.08	6.35	10.16		
		µ"			200	250	400		
Tensile	Ambient	Kg/mm ²			42.2	38.7	36.9		IPC-TM-650-2.4.18
		Kpsi			60	55	52.5		
	180°C	Kg/mm ²			21.1	21.1	21.1		
		Kpsi			30	30	30		
Elongation	Ambient	%			8	15	20		
	180°C	%			8	8	8		
Peel Strength* (Drum/Treated Side)	Cond. B	Kg/cm			0.98	1.16	1.25		IPC-TM-650-2.4.8
		Lbs/in			5.5	6.5	7.0		

* Peel strength measured on 170°C Tg Epoxy

Information in this document is believed to be accurate and reliable and is for informational purpose only. This data sheet does not create any warranties, expressed or implied, as to the fitness for any particular purpose or use. The Denkai America Inc. name and logo are registered trademarks of Nippon Denkai, Ltd. © 2020, Denkai America Inc. All rights reserved. Rev May 4, 2020