

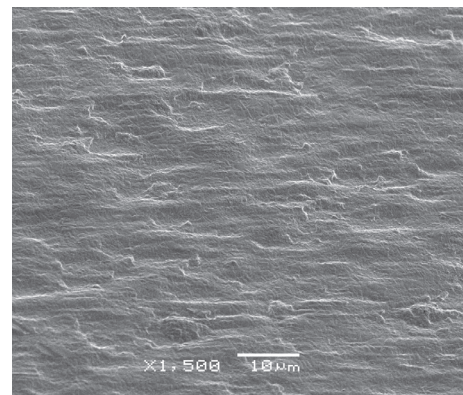
High reliability electrodeposited copper foil.

Applications:

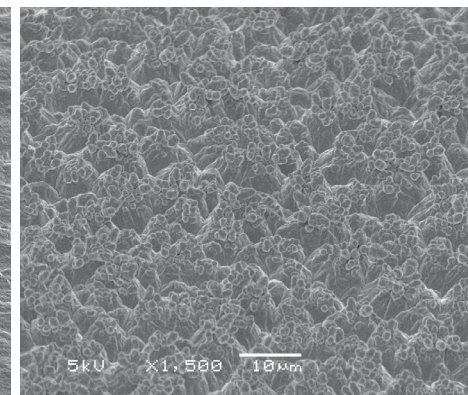
- PCB outer layers
- PCB inner layers

Features:

- IPC Grade III
- Treatment on matte side of foil
- Excellent adhesion to a wide range of resin systems



Untreated Drum Side
H oz. /18 μm (1500x)



Treated Matte Side
H oz. /18 μm (1500x)

Typical Values:

Attribute		Unit	Value						Reference
Thickness Designation			Q	T	H	1	2	3	IPC-4562, 1.2.5.1 Table 1-1; IPC-TM-650-2.2.12
Nominal Thickness		μm	9	12	18	35	70	103	
		oz.	1/4	3/8	1/2	1	2	3	
Area Weight		g/m ²	75.9	106.8	152.5	305	610	915	
		g/254 in ²	12.5	17.5	25	50	100	150	
		oz./ft ²	0.25	0.375	0.5	1	2	3	
Roughness	Drum Side	μm	0.25						IPC-TM-650-2.2.17
		μ"	10						
	Matte Side	μm	4.3	5.1	5.1	6.4	10.2	15.6	
		μ"	170	200	200	250	400	615	
Tensile	Ambient	Kg/mm ²	44.4	42.2	42.2	38.7	36.9	34.7	IPC-TM-650-2.4.18
		Kpsi	63	60	60	55	53	49	
	180°C	Kg/mm ²	21						
		Kpsi	30						
Elongation	Ambient	%	4	6	8	15	20	25.2	
	180°C	%	8						7.4
Peel Strength* (Matte/Treated Side)	Cond. B	Kg/cm	1.0	1.3	1.3	1.9	2.7	4.0	IPC-TM-650-2.4.8
		Lbs/in	5.6	7.0	7.5	10.5	15.0	22.5	

* Peel strength measured on 170°C Tg Epoxy

Information in this document is believed to be accurate and reliable and is for informational purpose only. This data sheet does not create any warranties, expressed or implied, as to the fitness for any particular purpose or use. The Denkai America Inc. name and logo are registered trademarks of Nippon Denkai, Ltd. © 2020, Denkai America Inc. All rights reserved. Rev May 4, 2020